

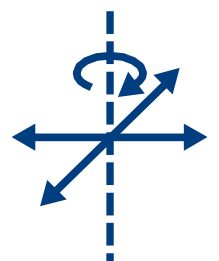
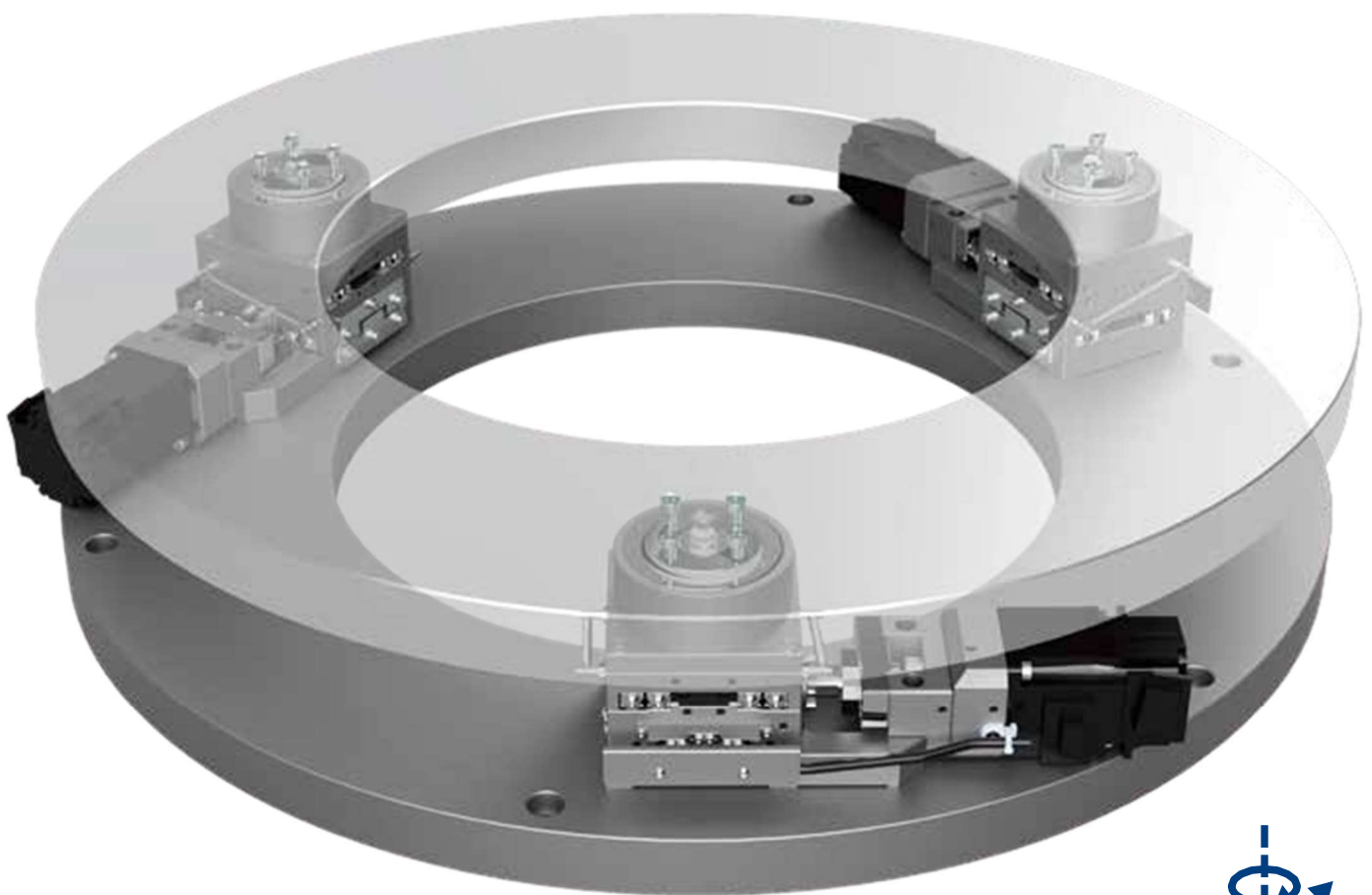
# Smart Alignment

## 高跟隨性 $0.1\mu\text{m} \pm 20\text{nm}$

高分解能  
High Resolution

高穩定性  
Stable Motion

三點控制  
Triangle



# 關於超高精度 Alignment Stage 的介紹

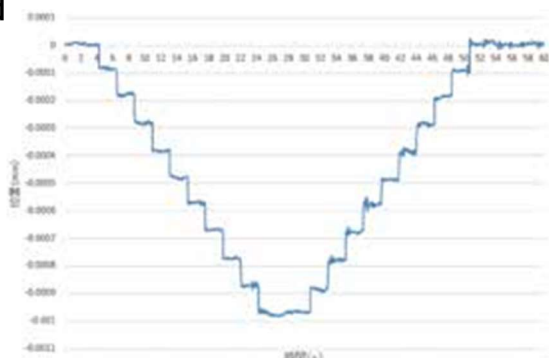
無需使用光學尺等回授信號，也能實現穩定的微步進運動。

# 1

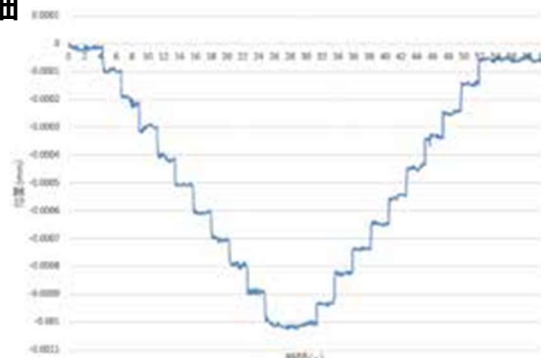
參考資料 測定機器Renishaw XL-80 測定環境:室溫23° C 濕度40%

1Pitch=0.1 $\mu$ m · 10步往返的測值

## X 軸



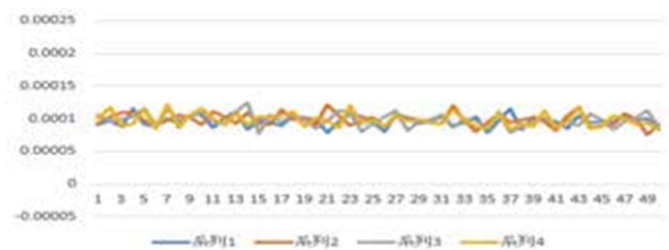
## Y 軸



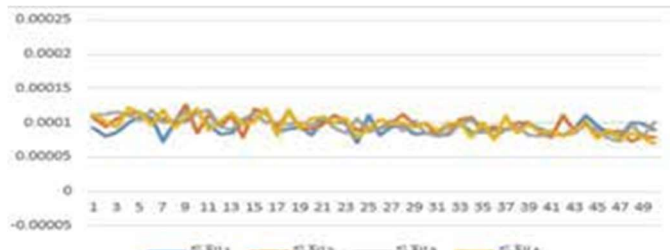
# 2

1step=0.1 $\mu$ m的實測值

## X 軸



## Y 軸



■ 驅動イメージ



X方向



Y方向



$\theta$ 方向